

Wi-Fi Smart Door/Window Magnetic Manual

Product Review:

Smart door and window sensor is WIFI sensor, it is contact magnetic sensor, it detects actions of (opening/closing), which make it ideal for security alarm systems as well as automation in combination with smart WIFI switch.

Specification:

Input Voltage: DC3V LR03

Static Current: $\leq 45\mu\text{A}$

Alarm Current: $\leq 55\text{mA}$

Low-Voltage Notification: $\leq 2.2\text{V}$

Wi-Fi: 802.11 b/g/n

Magnetic control distance: $\geq 15\text{mm}$

Working Temperature: $-10^{\circ}\text{C}\sim+50^{\circ}\text{C}$

Working Humidity $\leq 95\%\text{RH}$



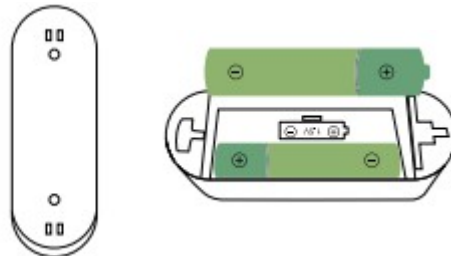
How to use:

1. Download Tuya Smart APP, or scan the QR code to download

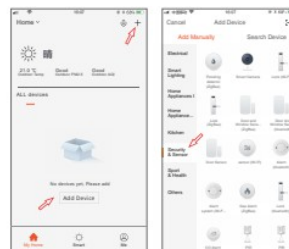


Android / IOS

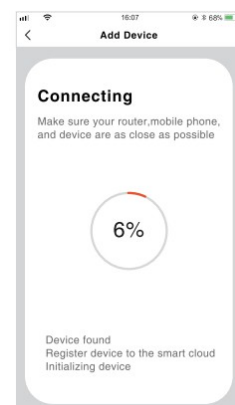
2. Push the mounting bracket upward and take out the bracket, then insert two batteries according to the graphics in the battery pin. After batteries are loaded, the indicator lights are always on and then off.



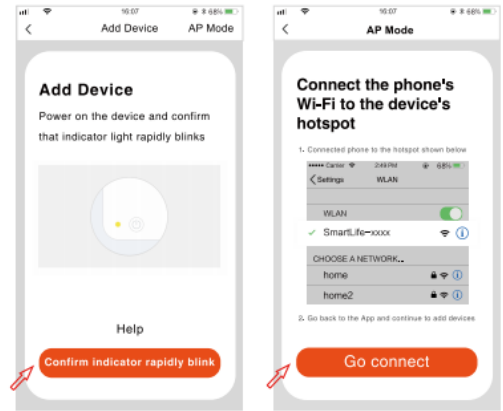
3. Register the APP with your cellphone number. Then click "+" on "My Home" or click on the blank to "Add Device", select security sensor, and click door magnetic sensors.



4. With the card pick-up Pin in the accessory package, hold the reset key for more than 5 seconds, and the indicator flashes into the automatic network connection mode, enter the Wi-Fi password according to the prompt, and click confirm.



5. In the automatic Network connection mode, indicator flashes
 Flashes quickly, holds the reset key for 5 seconds with the card
 Pick-up pin, the indicator flashed slowly, and enters the manual
 Network connection model. APP chooses compatible model.
 According to the prompt, enter Wi-Fi password and click confirm.
 Then switch to the Wi-Fi setting interface, connect smartlife_XXX
 Network and return to APP to continue adding devices.
 Device.



6. Configuration network successfully, click door magnetic icon to
 Enter the interface, open the door magnetic, APP will remind you
 The door is open, close the door magnetic, APP will remind you
 The door is closed.

