



Mobile APP Download Guide

1 Scan QR code to download APP or search eWeLink to download APP



Scan QR code

or



search eWeLink to download APP



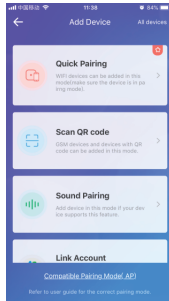
2

Open APP,
click "+"
to add device



3

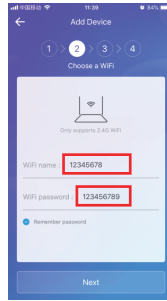
Click quick pairing



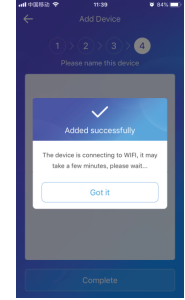
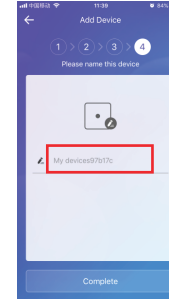
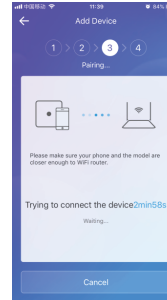
As shown in the red box

4

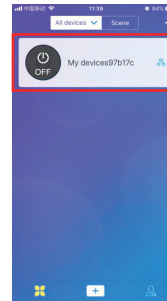
Input WIFI name
and password,
click next



5 Name this device, click complete



Can change device name (such as company gate)



OFF



ON

